



# Welcome



**Vulcan**  
Materials Company  
East Jackson County Quarry



# COMMITTED TO JACKSON COUNTY

Doing The Right Thing, The Right Way, At The Right Time.

We are committed to responsibly building our investment in Jackson County by creating and supporting jobs and economic opportunity while operating safely, reliably and in an environmentally responsible manner.

We make construction aggregates that help grow and sustain communities while forming the building blocks for the region's roads, bridges, homes, hospitals, schools, office buildings and places of worship.

## Economic

- \$40M+ additional investment in Jackson County
- Creating 10-13 new jobs with employment ramping up in future years
- Builds on our current economic benefits to the County:
  - \$1.1M approx. annual spend with County businesses and organizations
  - \$1.2M approx. annual investment operational and capital expenses
  - 36 employees and retirees living in Jackson County today

## Environment

- Meet or exceed local, state and federal requirements.
- Capture and store rainwater for use in dust control and aggregate production.
- Maintain a comprehensive dust control plan.

## Community

- Participates in community events and support local organizations including Jefferson Fire Department, Empower College & Career Center, Jackson County Area Chamber of Commerce and more.
- Partners with area schools to foster student learning.
- Maintains a 24/7 East Jackson County Quarry community line and open communication with neighbors.



WELCOME

Community Line (706) 247-7529 | [eastjacksoncountyquarry@vmcmail.com](mailto:eastjacksoncountyquarry@vmcmail.com)

**Vulcan**  
Materials Company  
East Jackson County Quarry



# OPERATIONS

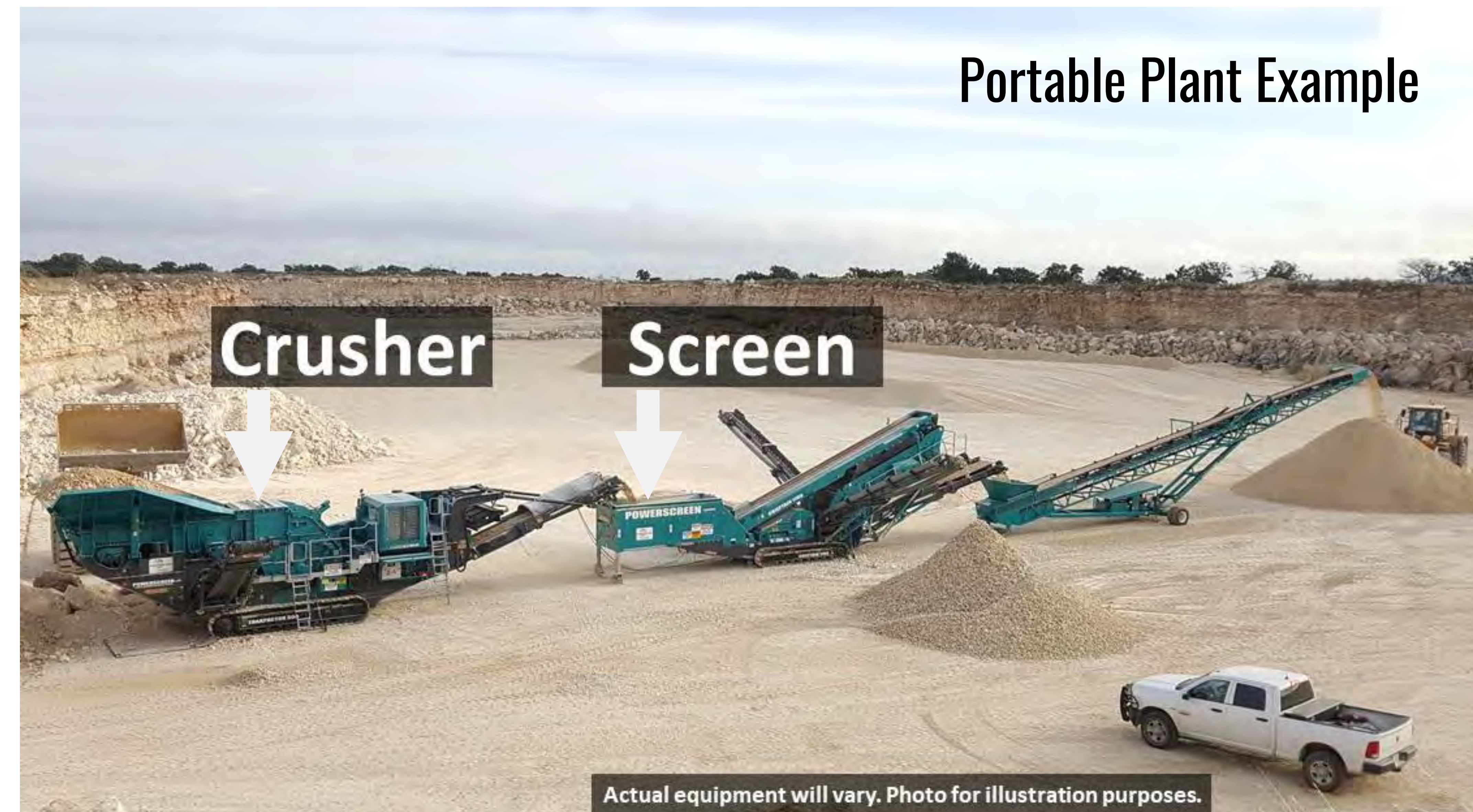
We will follow detailed engineering plans to safely and precisely extract the natural granite material for processing and shipping to support local construction and building projects.

## How we make big rocks into small rocks:

- Engineered mine plans will be the blueprint to safely and responsibly develop and manage the site.
- Rock will be drilled according to plan and safely blasted in the mining area.
- Haul trucks will transport the rock to the portable plant.
- The portable plant includes primary and secondary crushers and screens.
- A loader will feed the rock into the portable plant for processing to customer specifications.
- A wheel loader will load customer trucks.
- Customer trucks will be weighed and get a ticket before exiting.

The project will be designed and operated to meet or exceed all state and federal requirements and regulations.

## Portable Plant Example

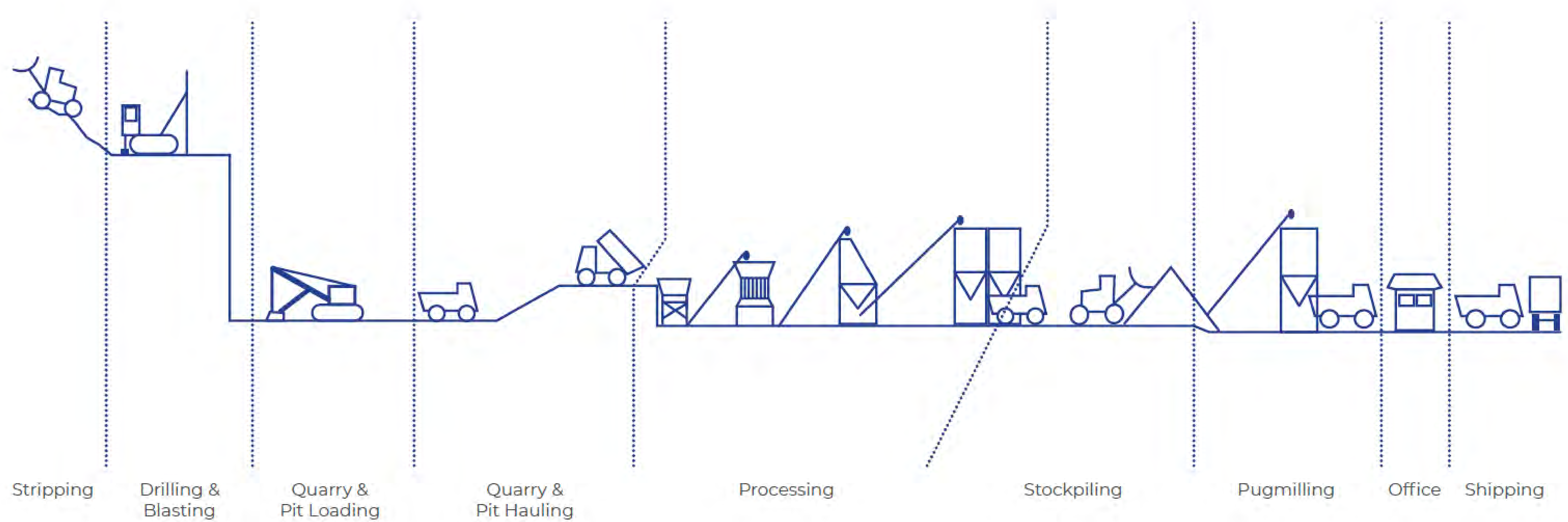


## Key Features

- Vegetated berms
- On-site stormwater collection to support operations
- Dust control plan
- Erosion and sediment control plan
- Third-party monitoring of blasting activity



# WE MAKE BIG ROCKS INTO SMALL ROCKS



OPERATIONS

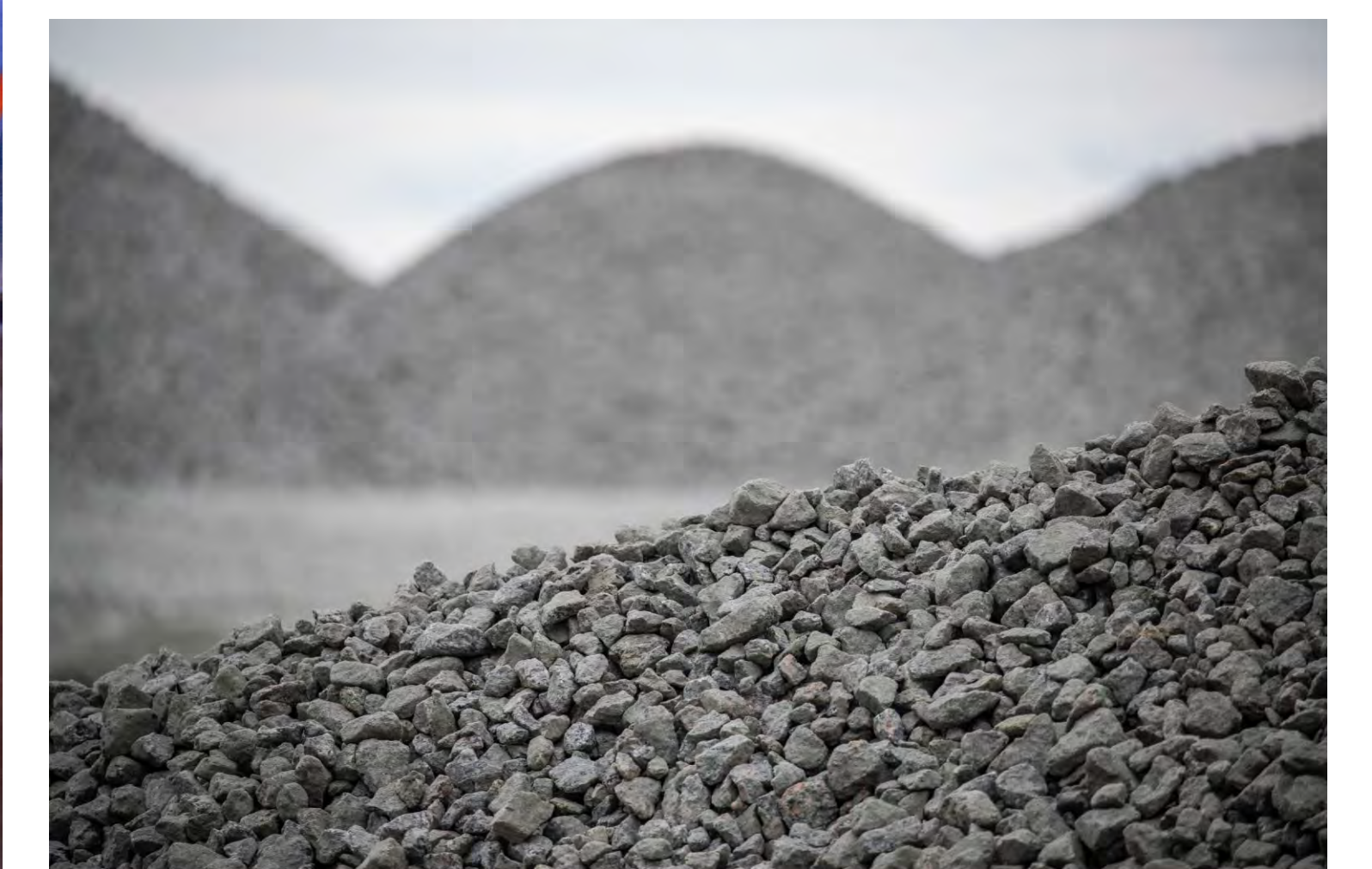
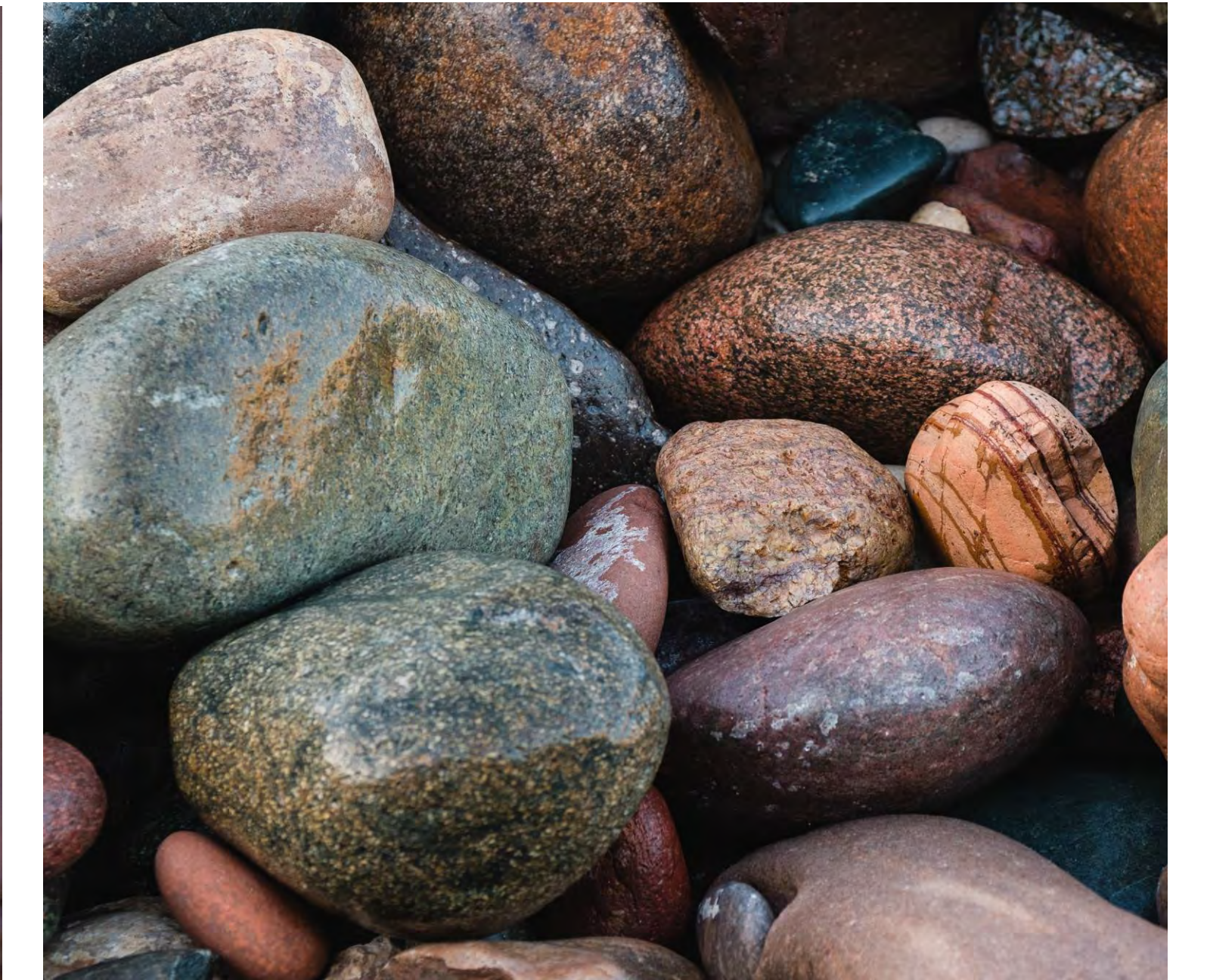
Community Line (706) 247-7529 | [eastjacksoncountyquarry@vmcmail.com](mailto:eastjacksoncountyquarry@vmcmail.com)

**Vulcan**  
Materials Company  
East Jackson County Quarry



# CONSTRUCTION AGGREGATES

Drive our economy.



**How much  
do we need?**

**38,000 tons**  
builds one lane-mile of a  
four-lane interstate highway

**400 tons**  
builds the  
average home

**80%**  
amount of aggregate  
in concrete

**94%**  
amount of aggregate  
in asphalt pavement

OUR PRODUCTS

Community Line (706) 247-7529 | eastjacksoncountyquarry@vmcmail.com

**Vulcan**  
Materials Company  
East Jackson County Quarry



# PROTECTING OUR PEOPLE & COMMUNITY

Safety guides us in everything we do.

## Our commitments

- Meeting or exceeding local, state and federal laws and regulations proven to protect our people, community and the environment.
- Prioritizing a safe work culture by recruiting and hiring people who are as committed to safety as we are.
- MSHA Citation Rate: consistently lower than the industry.
- Maintaining safe, engineered blasting procedures to protect our people, neighboring property and the community.
- Monitoring all blasting through an independent third party.
- Consistently meeting or doing better than the regulated safety blasting limits which are designed to protect people, property and structures.





# REGULATORY SAFEGUARDS

Protecting our employees, neighbors, community and environment.

We will meet or exceed local, state and federal laws and regulations proven to protect our people, community and the environment.

In addition to seeking County approval, we will also need permits and approvals from various state and federal regulatory agencies.



## Georgia Environmental Protection Division (GAEPD)

- **Mine Permit & Inspections**  
GAEPD Land Protection Branch protects the surrounding environment (air, water, land) and land reclamation.
- **Air Permit & Inspections**  
GAEPD Air Protection Branch regulates emissions from plant equipment, product stockpiles and haul roads.
- **Water Permit & Inspections**  
GAEPD Watershed Protection Branch regulates discharges into the Waters of the U.S. and protects water quality standards for surface waters.
- **Water Quality Certification**  
GAEPD Watershed Protection Branch regulates water quality standards (streams & wetlands) and requires site visits during permitting phases.

## U.S. Environmental Protection Agency (USEPA)

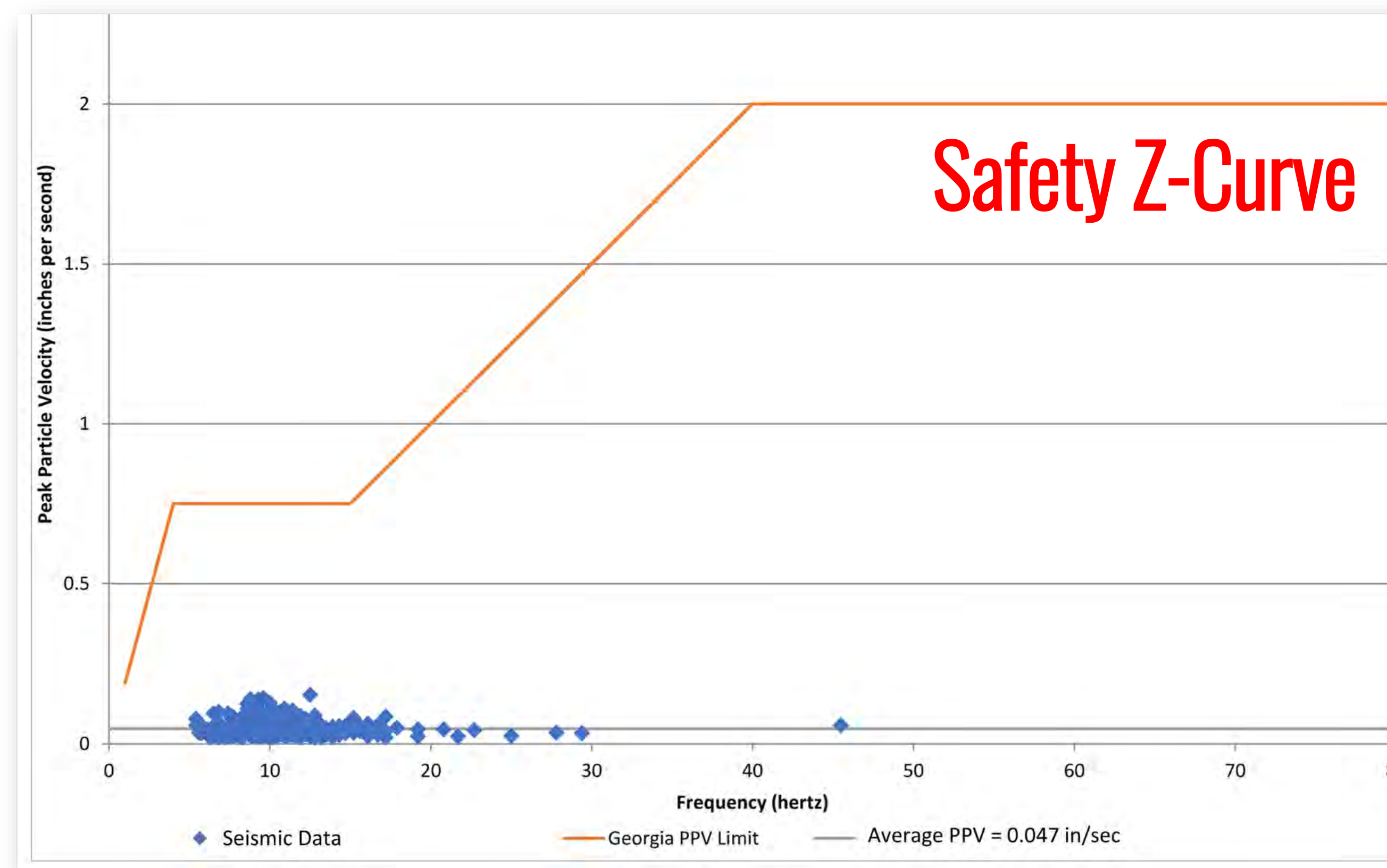
- Requires a Spill Prevention Control Countermeasure "SPCC" Plan. These plans help facilities prevent oil spills, as well as control a spill should one occur.

## U.S. Army Corps of Engineers (USACE)

- Requires 404 Permits and site visits during permitting phases (streams & wetlands) and regulates the discharge of dredged or fill material into Waters of the U.S.



**Blasting is regulated by the State of Georgia as part of the mining permit which sets requirements for procedures, limits, monitoring, record keeping and reporting. The limits follow U.S. Bureau of Mines safety standards that are scientifically proven to be safe.**



- Each blast is custom designed, modeled and executed by an engineering team and certified, trained professionals.
- Each blast lasts less than 1 second and is individually engineered to account for the geology, geometry and location.
- Our engineers use laser profiling and digital modeling to predict specific shot behavior that is far below scientifically proven limits proven to be safe.

- Structures react in predictable and proven ways based on science and available data.
- Scientific research has extensively shown that if blasting activities do not regularly produce vibration levels that exceed the limits (**the red line above**) set by the U.S. Bureau of Mines, the cosmetic damage potential (and thereby structural damage potential) from blasting is zero.
- We operate within additional safety margins.

- Each blast is required to be monitored at a distance no farther than the closest off-site regularly occupied structure not owned or leased by Vulcan.
- Our monitoring networks measure ground vibration and air blast overpressure, providing real-time data to our engineers and operations team.
- Our blasting programs are monitored by an independent third party.



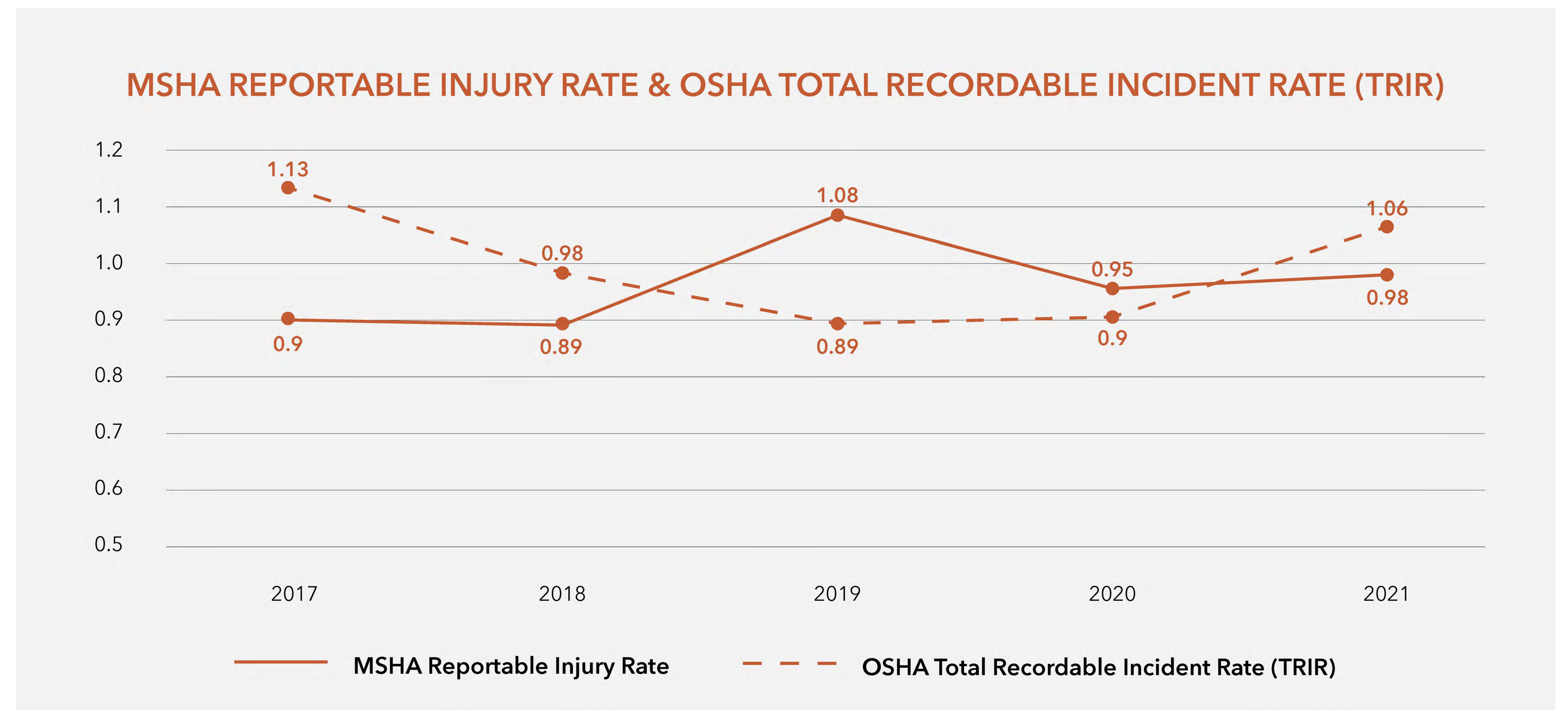
# LEADING THE INDUSTRY

Protecting people guides us in everything we do.

## Safety is a core tenet of Vulcan's culture.

We believe there is no greater responsibility than keeping our team members safe and healthy. It is our number one priority. It is also why our safety protocols and programs are so embedded in our Vulcan culture.

We are committed to engaging every team member — from plant managers and team members to our CEO and every level in between — to prioritize safety across all of our operations, offices and locations. We believe safety is a personal and shared responsibility. Our safety goal is zero accidents and injuries.



**94%**  
of 516 Facilities with ZERO  
Lost-Time Injuries  
2021



**131,477**  
Hours of Training Delivered  
2021



**100**  
Safety & Health Audits Conducted  
2021



# SERVING THE ENVIRONMENT RESPONSIBLY

Stewards of water, land and wildlife.

## Our commitments

- We will meet or exceed local, state and federal requirements.
- We will preserve and protect local water resources by recycling water, managing stormwater and utilizing effective dust-control measures.
- We will use vegetated berms to screen our operations.
- We will provide an area for Conservation/Recreation.





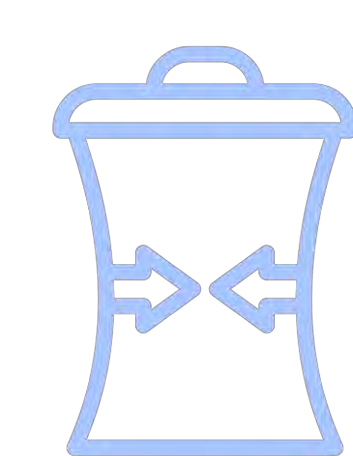
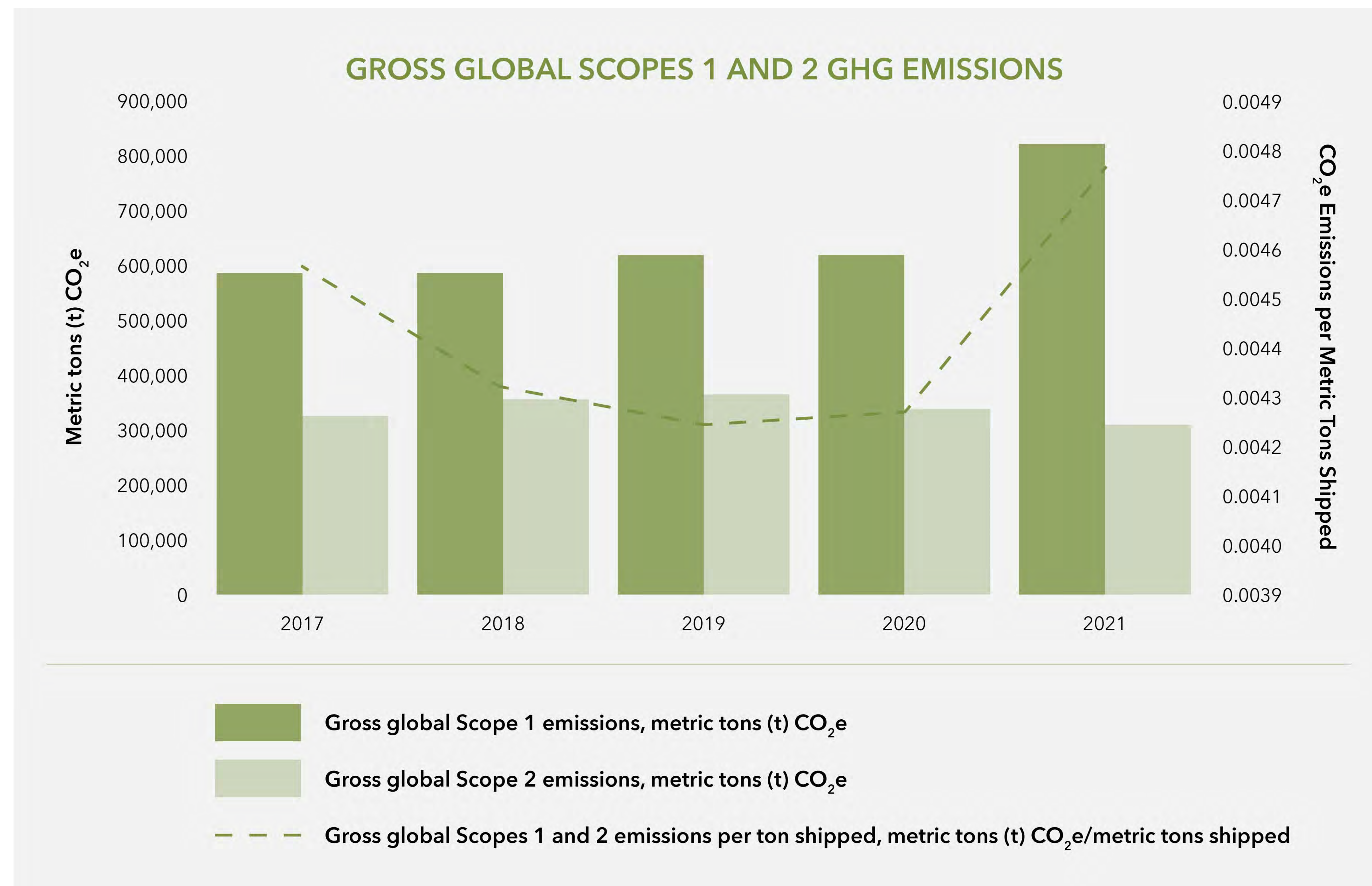
# REDUCING OUR IMPACT

Environmental stewardship is fundamental to our business.

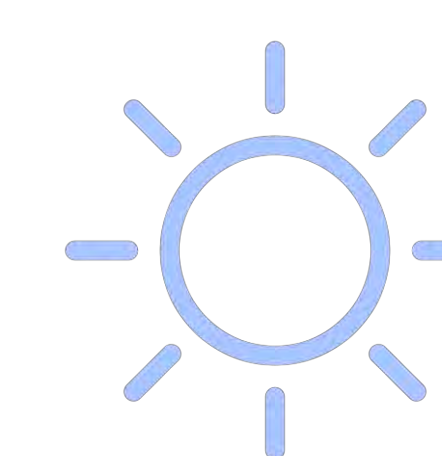
We believe environmental stewardship is fundamental to our business.

We recognize that responsible, sustainable operations drive long-term positive impact for our environment and our communities.

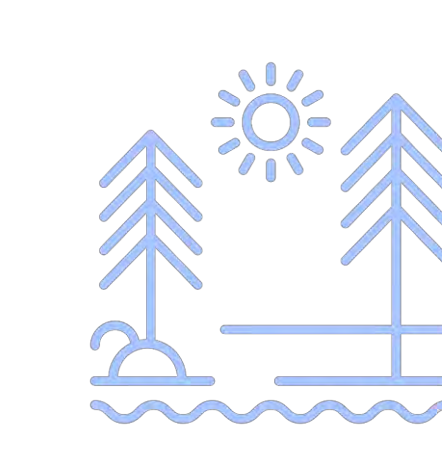
As an industry leader, we are committed to doing the right thing, the right way, at the right time. This means we operate our business with a focus on sustainability and a dedication to continuously improve ways to protect the environment. It's the right thing to do for society, for our business and our stakeholders.



**98%**  
Of waste diverted from landfills 2021



**42%**  
Of electricity use in Florida sourced from solar using renewable energy credits (RECs) 2021



**~6,300+**  
Acres managed for projects recognized by the Wildlife Habitat Council (WHC) 2021



# STRENGTHENING OUR COMMUNITY

## Good neighbors in Jackson County.

### Our commitments

- Provided \$49,000+ contributions and donations to schools and community organizations in the region (2022).
- Maintaining education partnerships to foster student learning including Empower College & Career Academy.
- Supporting first responders including Jefferson Fire Department.
- Partnering with organizations that assist members of the community that are aging, sick or hungry including Northeast Georgia Physicians Group Urgent Care.
- Maintaining a 24/7 East Jackson County Quarry community feedback line and email to respond to questions or concerns.



Jefferson Fire Department



Jackson County Agricultural Facility



Empower College & Career Center



Jackson County Chamber of Commerce



# WE'RE IN THIS TOGETHER

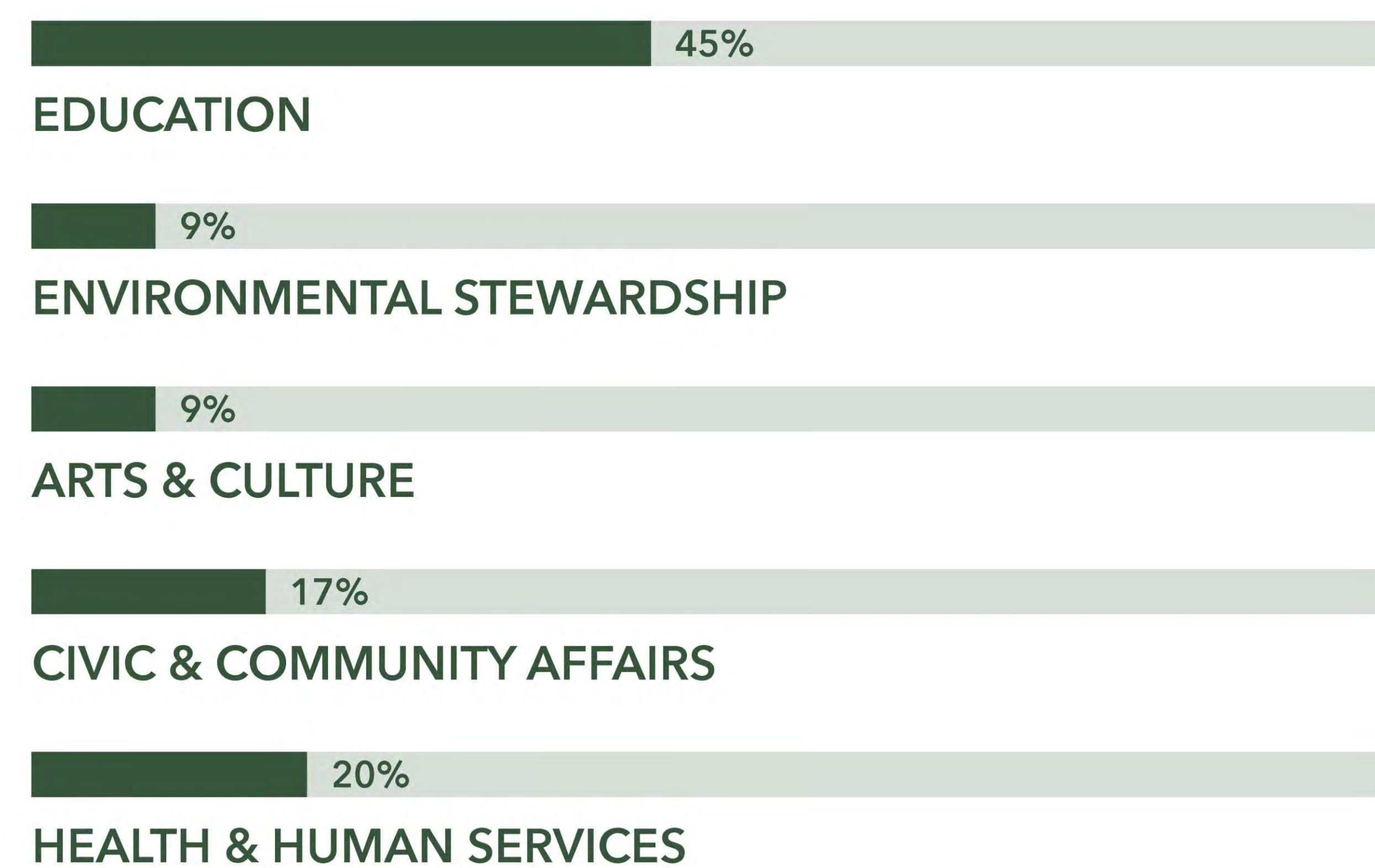
## Partnering with others helps build stronger communities.

One of our core tenets at Vulcan is being a good citizen and responsible steward of the communities in which we operate.

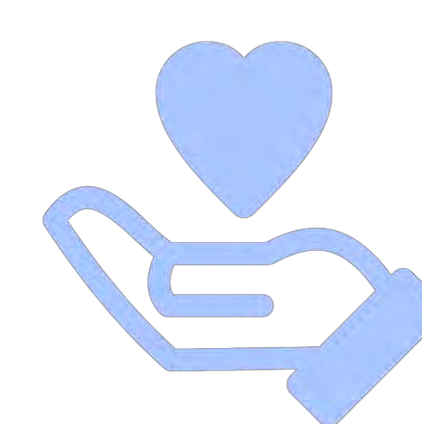
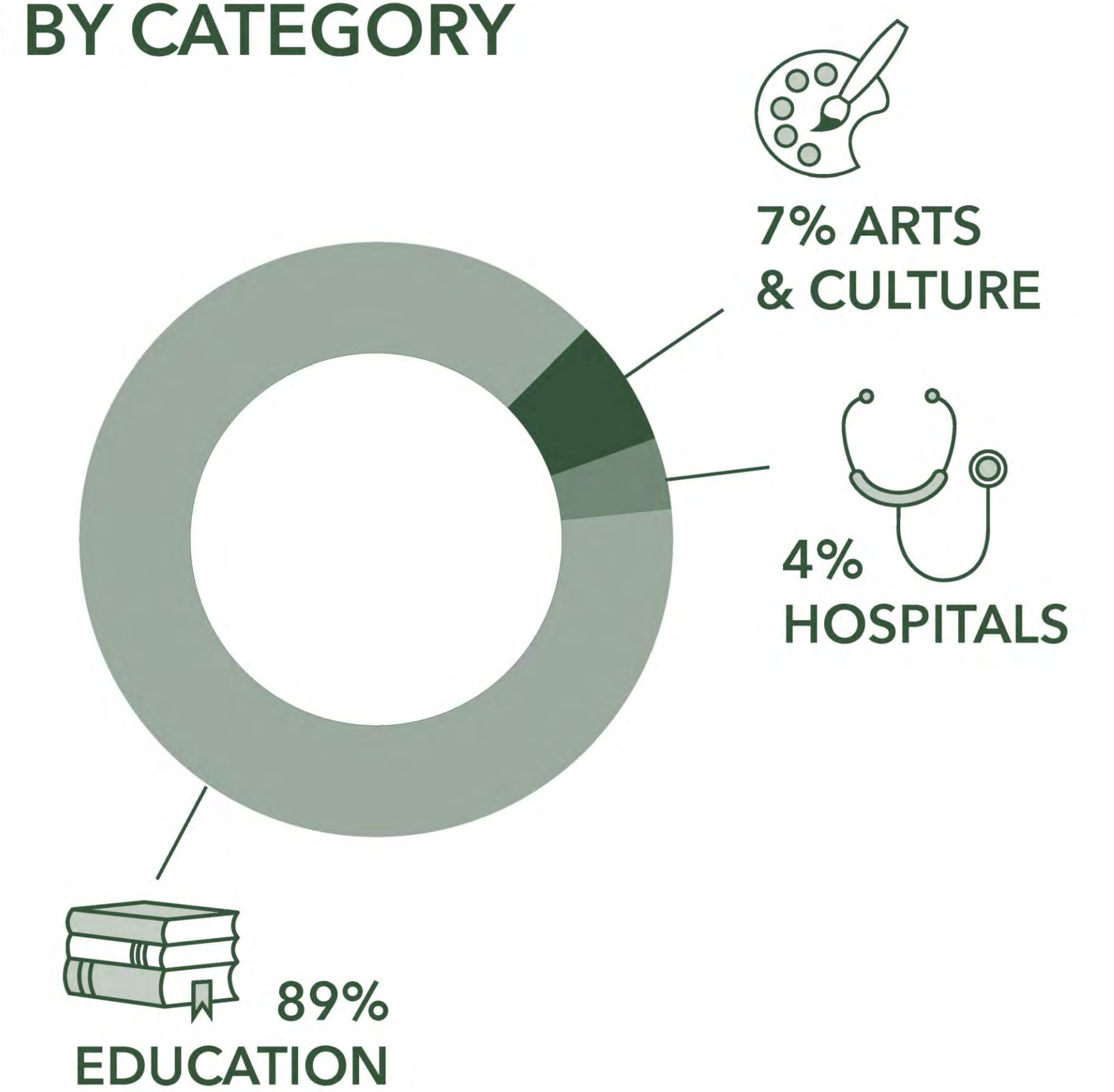
This philosophy has been instrumental in our continuing growth and prosperity across our operations.

From local community groups and philanthropic organizations to government officials, supply chain partners and Indigenous groups, we believe in being active and engaged neighbors. Our responsibility is to build strong relationships that support strong communities.

### FOUNDATION GIVING

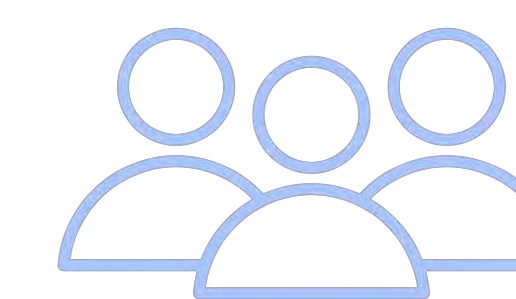


### EMPLOYEE MATCHING GIVING BY CATEGORY



**\$7MM+**

Community Giving & Support  
(Foundation, Non-Foundation  
and Matching Gifts)  
2021



**837**

Total of Foundation and Matching Gift  
Program recipients  
2021



**\$910,879**

In scholarships donated  
2021



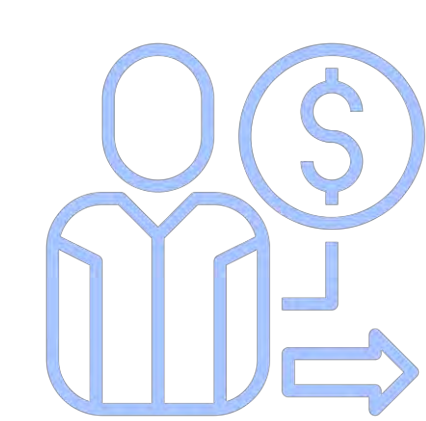
# SUPPORTING OUR PEOPLE

Sustaining a culture of integrity, teamwork and mutual respect.

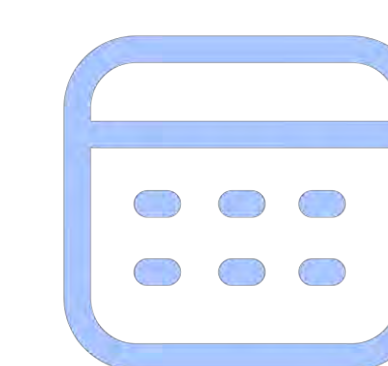
Vulcan's commitment to our people has played a key role in the ongoing success and growth of our company throughout our long history.

As a company, Vulcan is committed to supporting the 12,000 members of the Vulcan family by actively growing and sustaining a culture of integrity, teamwork and mutual respect.

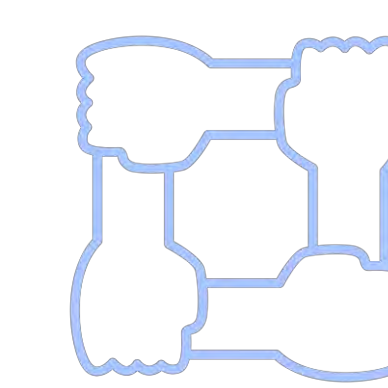
We understand that building a diverse workforce means focusing on diversity of backgrounds, lived experiences and diversity of thought. We believe true innovation and advancements in technology, processes and productivity come when all voices and perspectives are heard.



**95%**  
Of Vulcan Employees,  
participation in 401(k)  
retirement benefits  
2021



**9.65**  
Years as the average employee tenure  
2021



**Launched**  
Employee Resource Groups (ERGs) and  
Inclusion Leadership Unconscious Bias  
training  
2021